

PCase – First Steps and HowTos

A tutorial for PCase, the native CASE-Tool for OpenEdge to design, maintain and document your OpenEdge DB structure in OpenEdge Developer Studio.

<http://www.iap.de/pcase/>

Please send feedback and question to: info@tools4progress.com

Table of Contents

Step 1 - Download and Installation.....	2
Download Installer.....	2
Installation.....	2
Step 2 - Open PCase Perspective.....	4
Starting PCase.....	5
Stopping PCase.....	5
Step 3 - Working with Databases.....	6
Import Existing Database Directly.....	7
Import Existing Database from .df file.....	8
Step 4 - Open Database Diagram/Structure.....	9
Database Structure.....	9
Search tables and fields.....	10
Search with wildcards.....	10
Database ERD Diagram.....	10
Search tables, fields and indices.....	11
Step 5 - Database Subview.....	11
Create A Subview.....	12
Relations.....	14

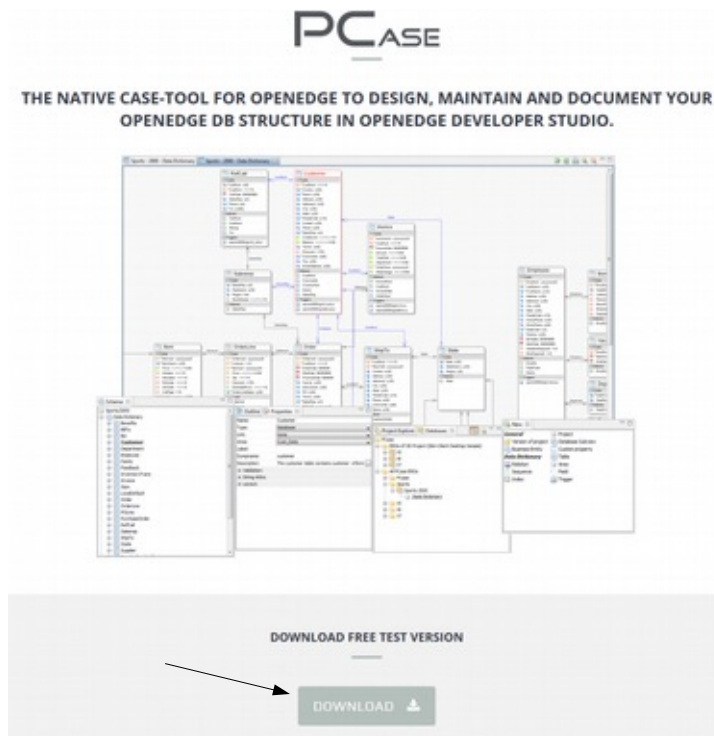
Step 1 - Download and Installation

PCase is installed with a typical Windows installer. To install PCase successfully, you must have installed [OpenEdge](#) before.

[Which version of PCase is supporting which version of OpenEdge?](#)

Download Installer

Installer is downloaded from IAP download page.



Download at www.iap.de/pcase/.

Select PCase 4.0.1 for OpenEdge 11.X or earlier versions.

Fill in contact details (functioning e-mail for download link), you receive a mail a few seconds later with download links. Follow the download link.

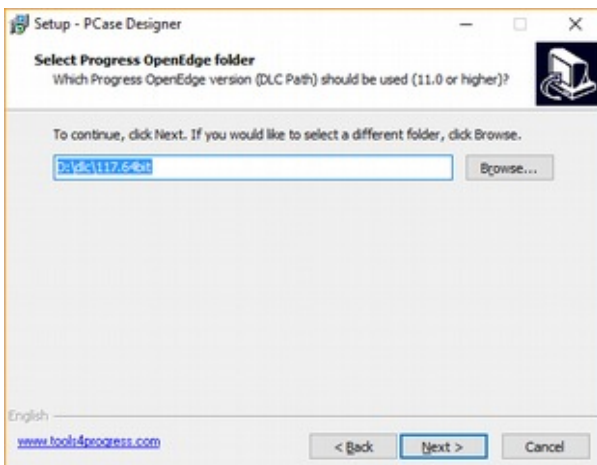
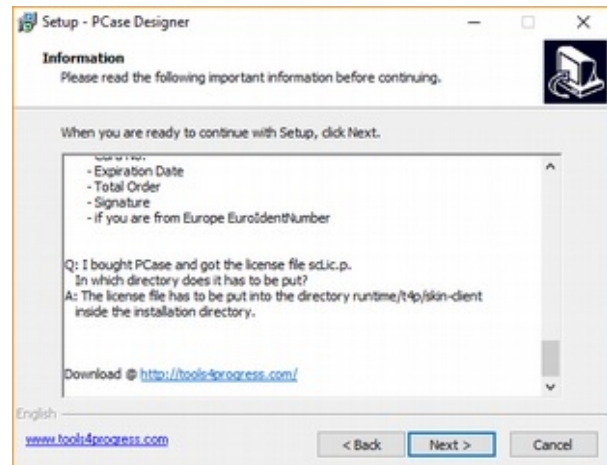
Download and execute the installer.

Installation

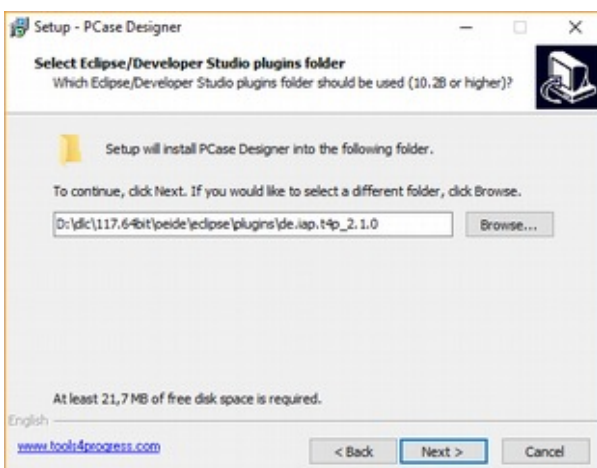
PCase is an Eclipse Plugin. By default it is installed into the OpenEdge folder:

{OpenEdge folder}\oeide\eclipse\plugins\de.iap.t4p_2.1.0\PCase

(In this case the OpenEdge version is 11.7 64bit).

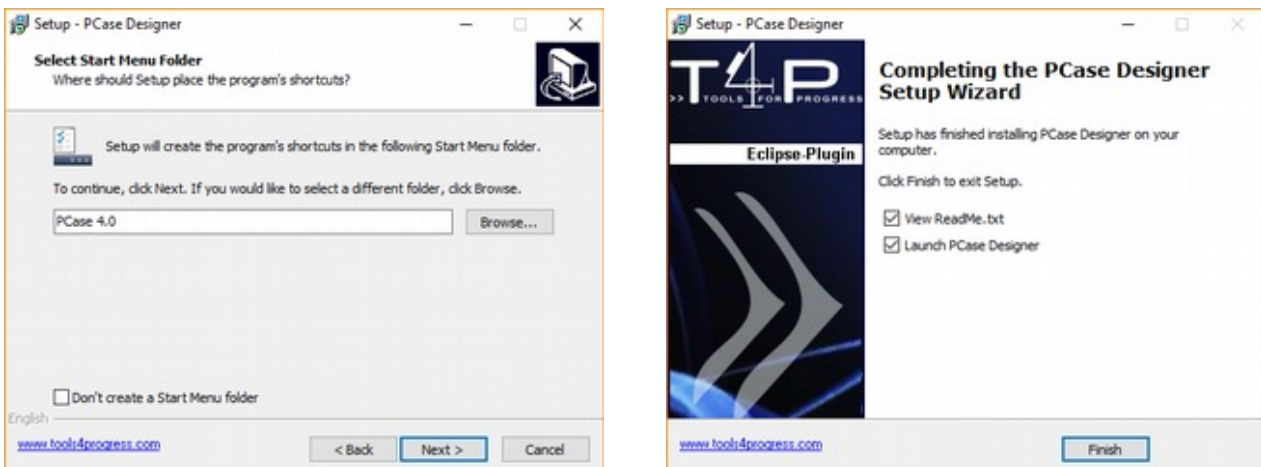


Installer suggests latest installed OpenEdge version. If there are multiple versions of OpenEdge installed, another 'DLC' can be chosen.



You need to select the correct Eclipse Plugin folder, otherwise Eclipse won't find the 'Tools4Progress' perspective.

You can however select another Eclipse version in this dialogue.



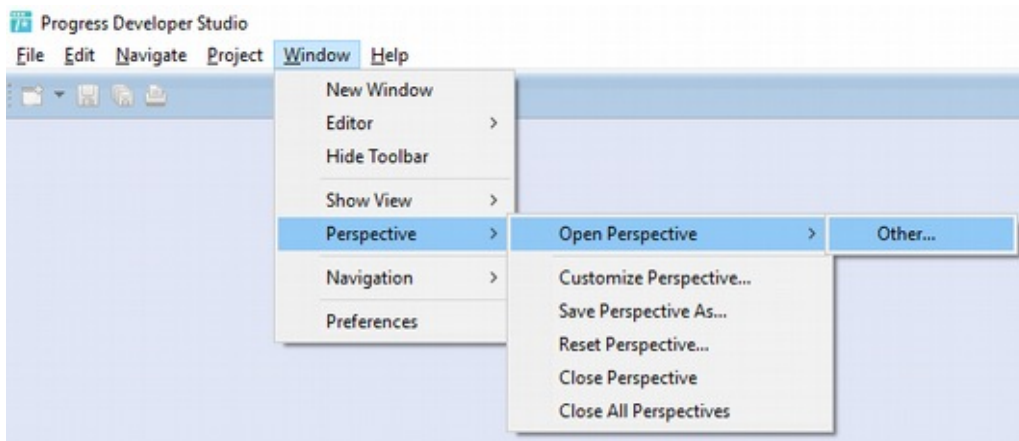
After you press 'Finish' it takes a while for OpenEdge to start. Here the PCase database is constructed for the OpenEdge version.

Step 2 - Open PCASE Perspective

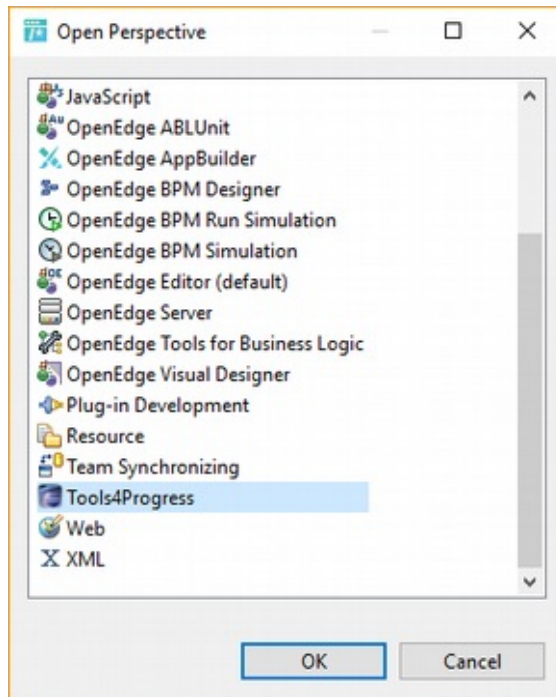
PCase is integrated into Eclipse (OpenEdge Architect / Studio). It comes with a perspective presenting the various PCASE views.

You can open the perspective via

'Window' > 'Perspective' > 'Open Perspective' > 'Other'.



There you find the perspective 'Tools4Progress'.



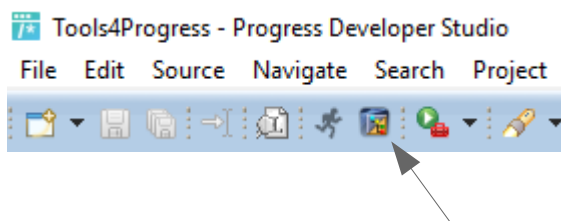
Start the perspective and new views and icons appear.

Problem – When you open the perspective, PCase may not start.

You can start and stop PCase using the following icons.

Starting PCase

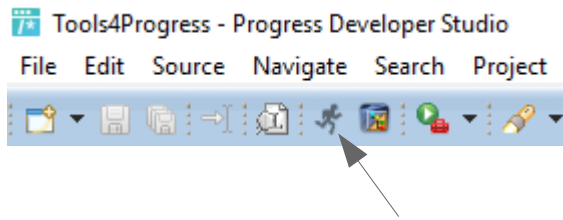
Select the  icon and the views related to PCase will open.



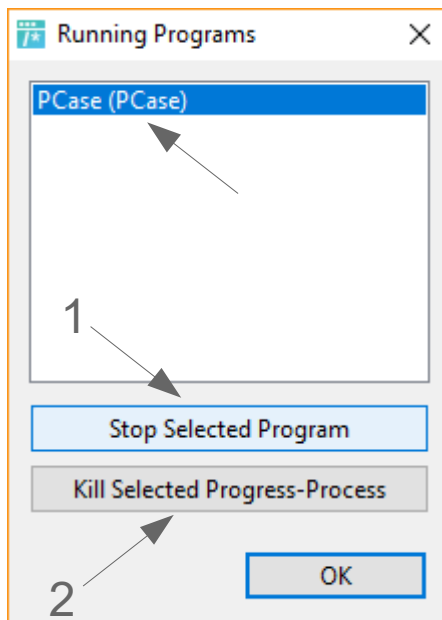
When you select the same icon again, PCase views will disappear.

Stopping PCase

Select the  icon.



Choose 'PCase (PCase)' in the following 'Running Programs' window, press 'Stop Selected Program' and confirm your selection.



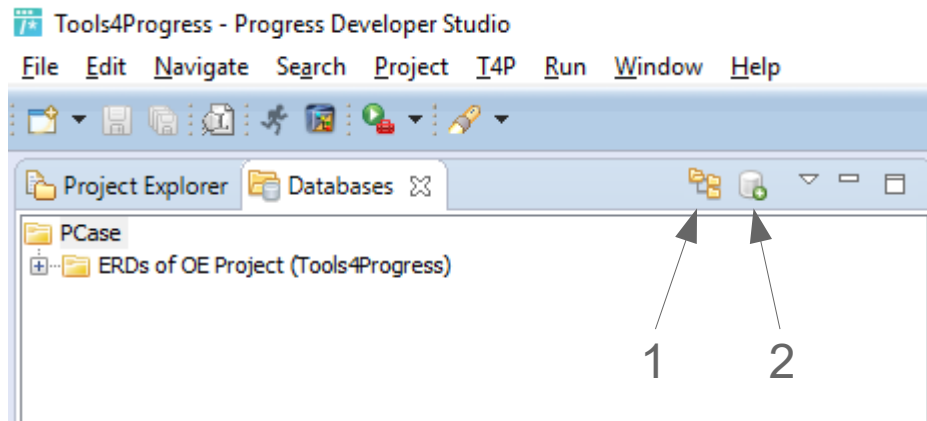
'1' is the default way to stop PCase.

'2' kills the session (like *nix 'kill' and 'kill -kill').

'Kill Selected Progress-Process' should only be used, if 'Stop Selected Program' is not working in a few seconds.

Step 3 - Working with Databases

PCase can show all projects or only projects related to the current OpenEdge project.



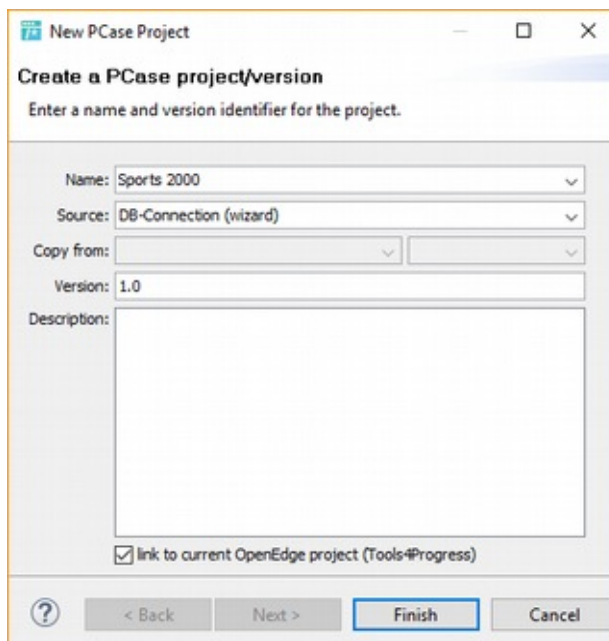
Toggle between views with button '1'.

Create a new PCASE project with button '2'.

Import Existing Database Directly

To import database you need a PCASE project, so if you don't have one already press the 'New' button ('2' in image above).

Select 'DB-Connection (wizard)' as source.





Linking the database version to OpenEdge project is mainly for displaying purposes. After you press 'Finish' an empty structure view of the new project will open.

Configure connection in 'Import Database' page of the wizard.

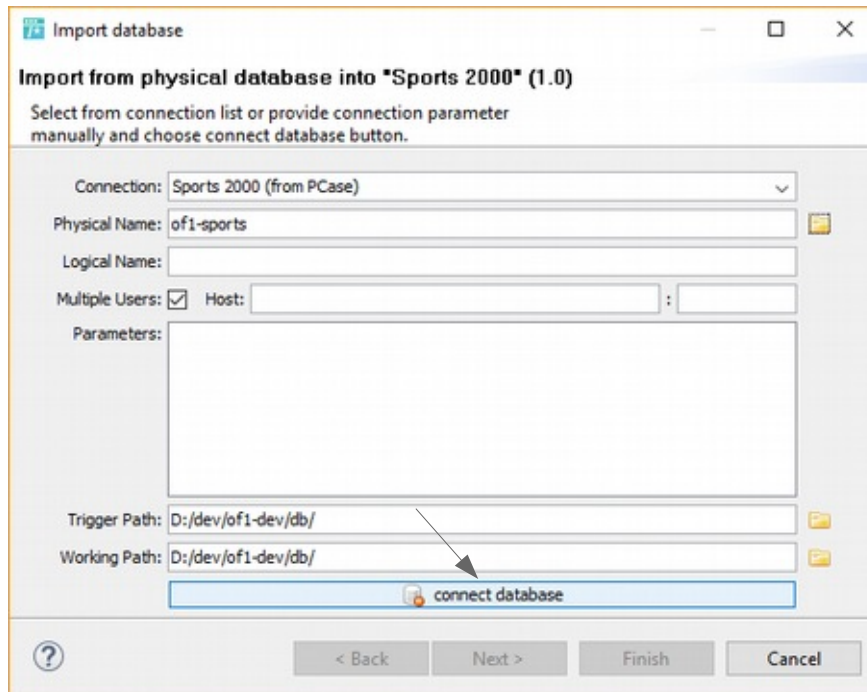
Hint: You might need to resize the window.

PCase must check the accessibility of the database.

To do so press 'connect database' button.

The  icon on the button will turn into  if successful.

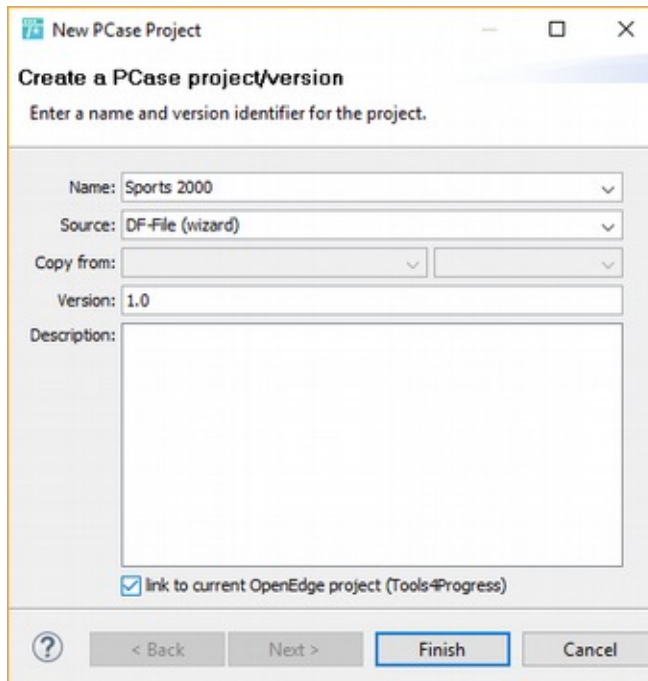
Finally press 'Finish' to complete the import.



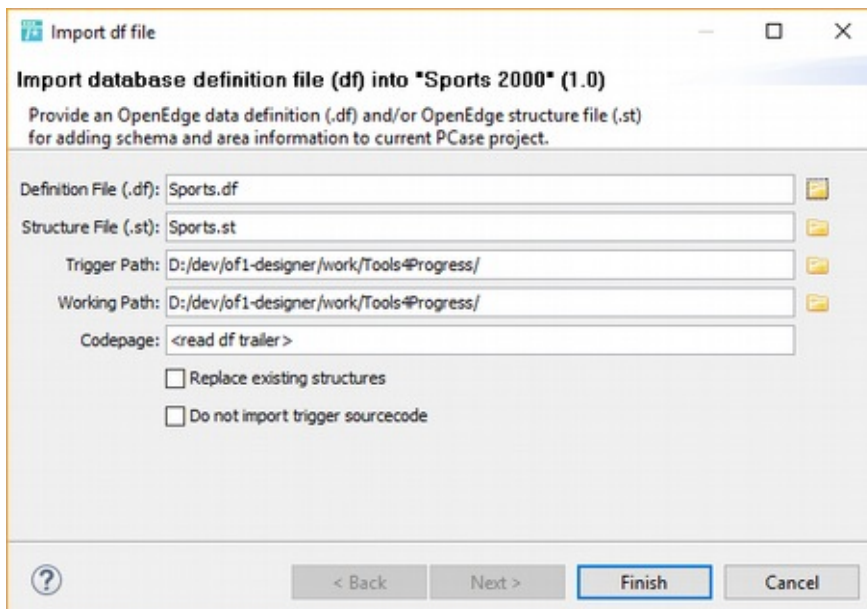
Import Existing Database from .df file

Create new project if none are available (see 'Import Existing Database Directly').

Select 'DF-File (wizard)' as source.



After you press 'Finish' an empty structure view of your new project will open.



Select the definition file and press 'Finish' again to import the database.

Step 4 - Open Database Diagram/Structure

PCase has about 10 views and when you make changes in any of these views, all according views will be updated to reflect these changes. e.g.:

- 'Schema' view: click on a table will jump to this table in structure view

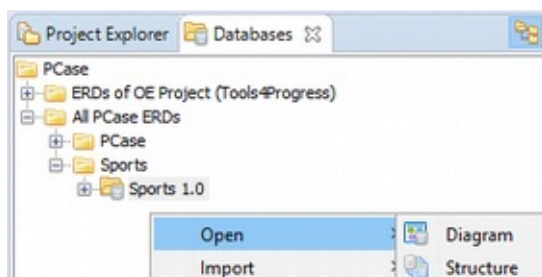
- 'Properties' view (near 'Outline' view) displays properties of selected object
- 'New' view will allow creating new objects on selected level (tables, fields...)

In PCase there are two main views to display the structure of the database.

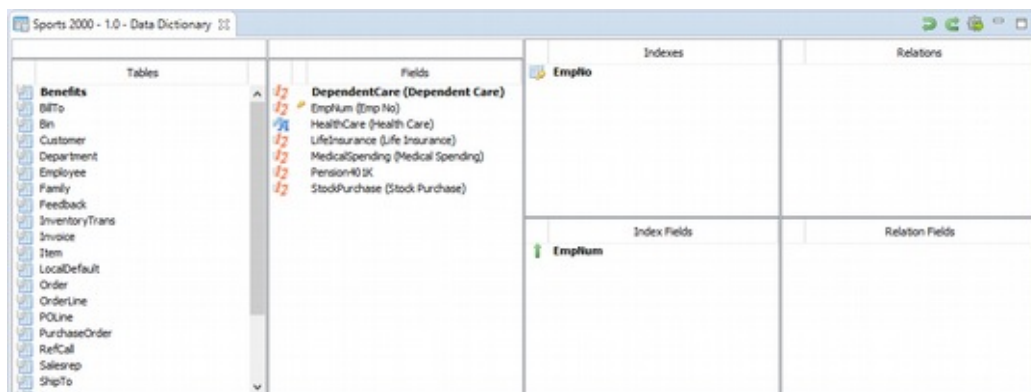
Database Structure

The database structure view could be used by programmers to find fields and tables quickly and to see what the structure of the meta schema looks like, including PCase meta information like relations.

Right clicking on the project opens view options in 'Open' entry.



'Open' > 'Structure' will open the structure view.



In structure view the following meta schema object types are visible:

- Tables of the project
- Fields of the tables
- Indices / index fields of the tables
- Relations / relation fields of the tables

Search tables and fields

You can search in tables and fields with these fields.



Entering a text in 'Tables' search field will show tables beginning with search term.

Same happens in 'Fields' search field, but this field filters the 'Tables' list at the same time – only tables containing the filtered fields are shown.

Search with wildcards

In search (tables and fields) you can use wildcards, using OpenEdge matches function:

Normal search works like: cust* (finds customer)
 Use any character for start: *book (finds custbookinfo)
 Use two asterisks: *book*in (finds custbooklastinfo)
 Use period: *last.nfo (finds custbooklastinfo)

Database ERD Diagram

'Open' > 'Diagram' opens the diagram view.

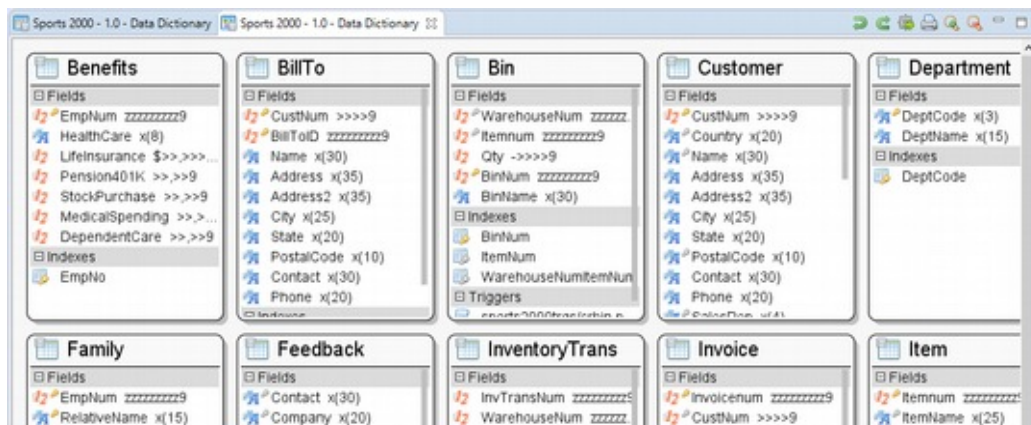
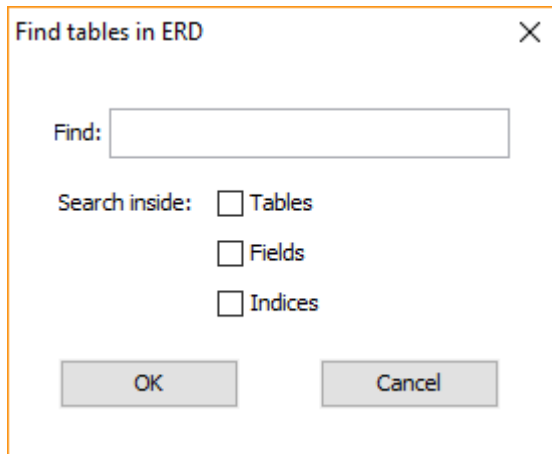


Diagram view shows the Entity Relationship Diagram (ERD):

- Tables of the project
- Fields of the tables (icon shows data type)
- Indices of the tables (icon shows index type e.g. unique, primary)
- Table relations
- Table triggers
- Field triggers

Search tables, fields and indices

Hit CTRL + F to search when focus is on diagram:



Hint: The window might show up outside of the Eclipse window.

After the search all tables with specified term are highlighted, wildcards are allowed too.

Step 5 - Database Subview

When you first open the diagram view your tables are unsorted. In general it is not possible to organize an ERD with hundreds of tables and thousands of relations.

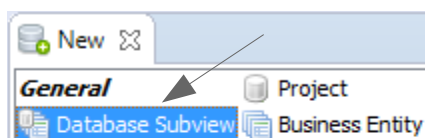
Instead it is intended to create so called 'subviews' with tables which are related to another (like user tables, material tables, invoice tables).

In these subviews you can link the tables with relations and tidy up the positioning of the entities (Tables). The relations will also be visible in other subviews, the main diagram and in the structure view.

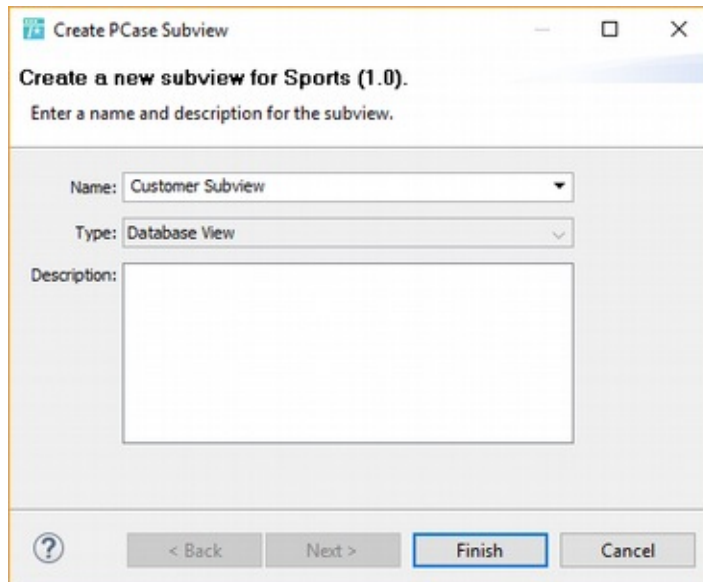
Create A Subview

Select your PCase project, open the structure view.

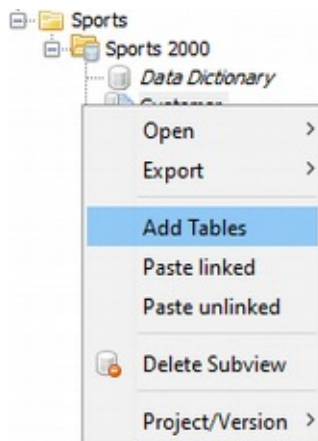
In 'New' view (top right corner) double click 'Database Subview'.



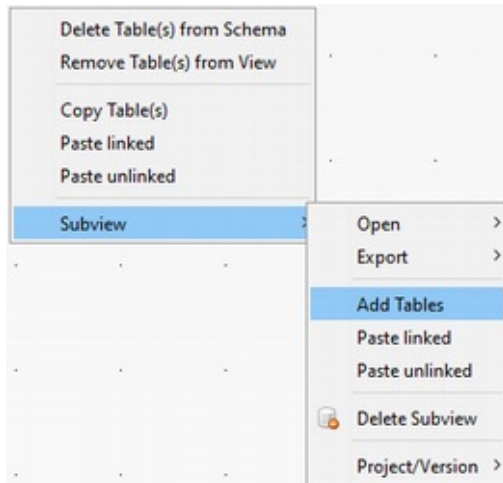
Give the subview a name and then press 'Finish'. An empty subview shows up.



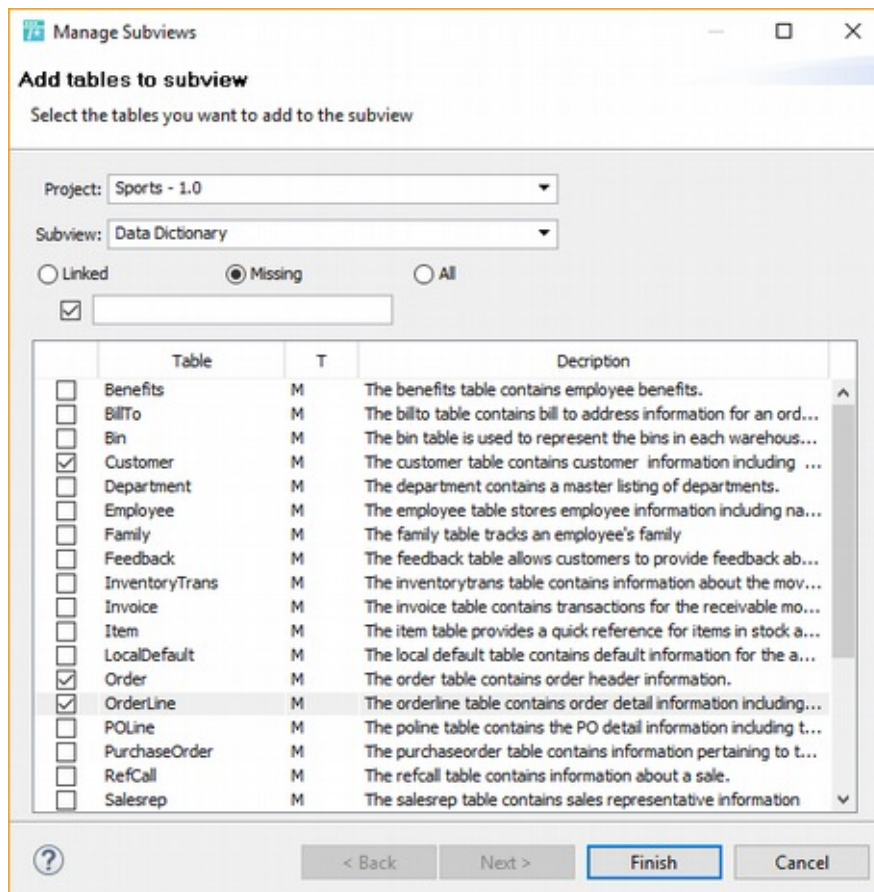
Right click on the subview in the 'Databases' view and select 'Add Tables'.



Hint: The context menu might look different when you right click in the subview. Simply navigate to 'Subview' > 'Add Tables'.



Select the tables you want to show up in the subview and then 'Finish'.

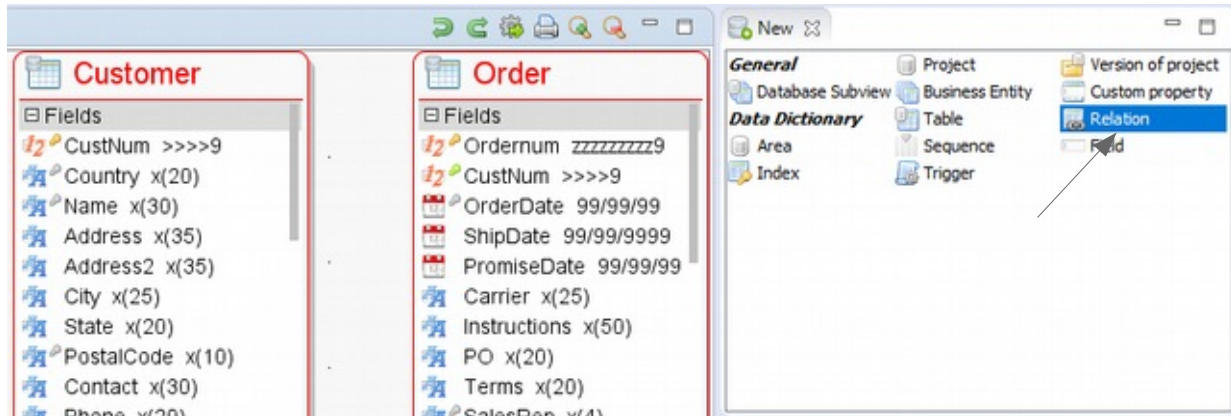


The tables show up but they are unrelated, you need to add relations still.

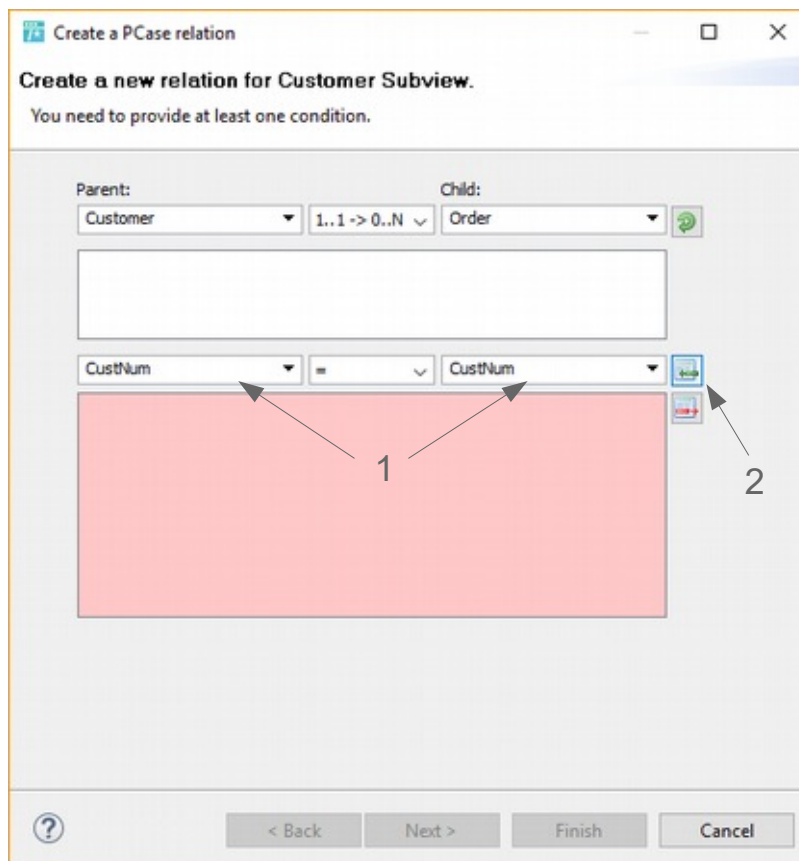
Hint: It is possible that the added tables show up outside of the 'Overview' view on the right side. When you scroll out you can drag them all in one spot.

Relations

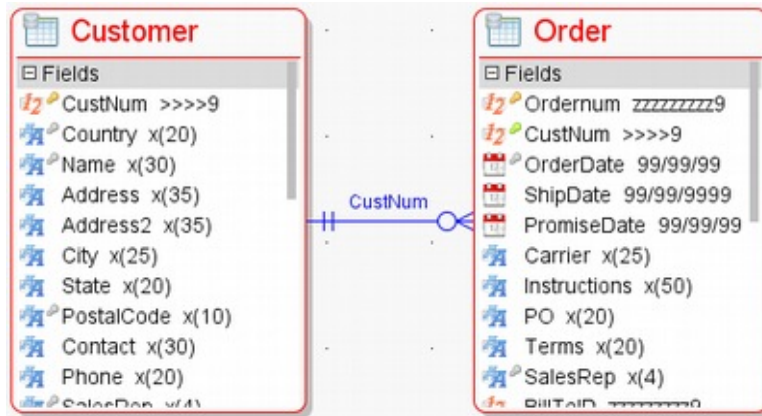
Add relations by selecting two or more tables and double click 'Relation' in the 'New' view.



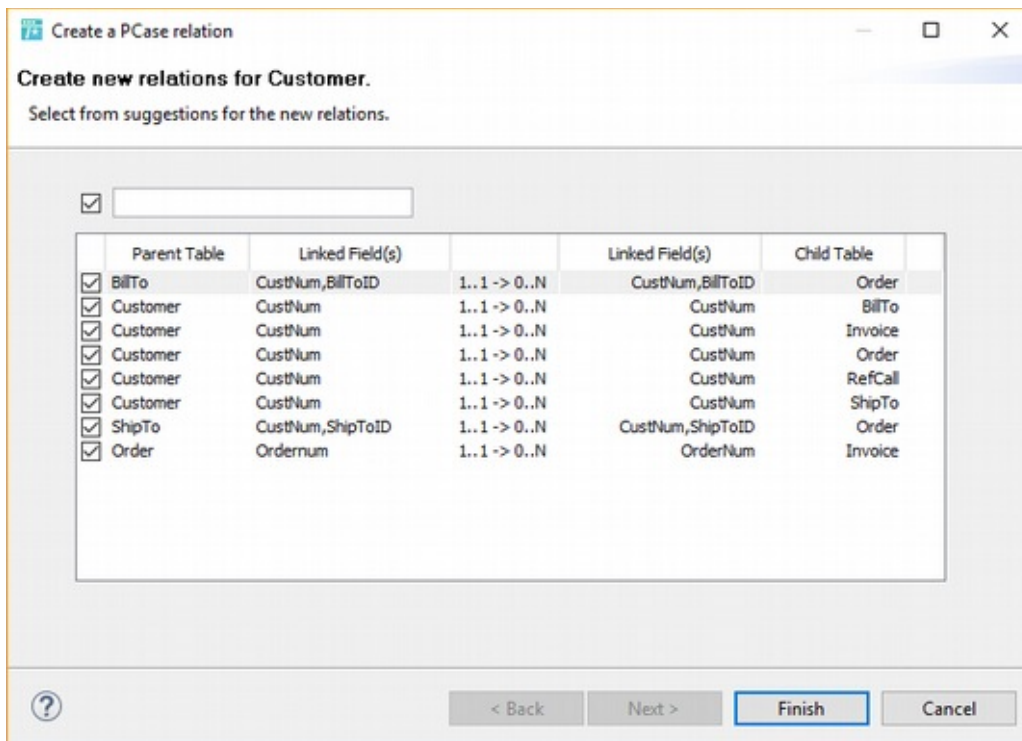
If two tables were selected: in the upcoming window type in field names in respective fields '1' and choose the green button '2' to the right to add the relation. Finally press 'Finish' to confirm.



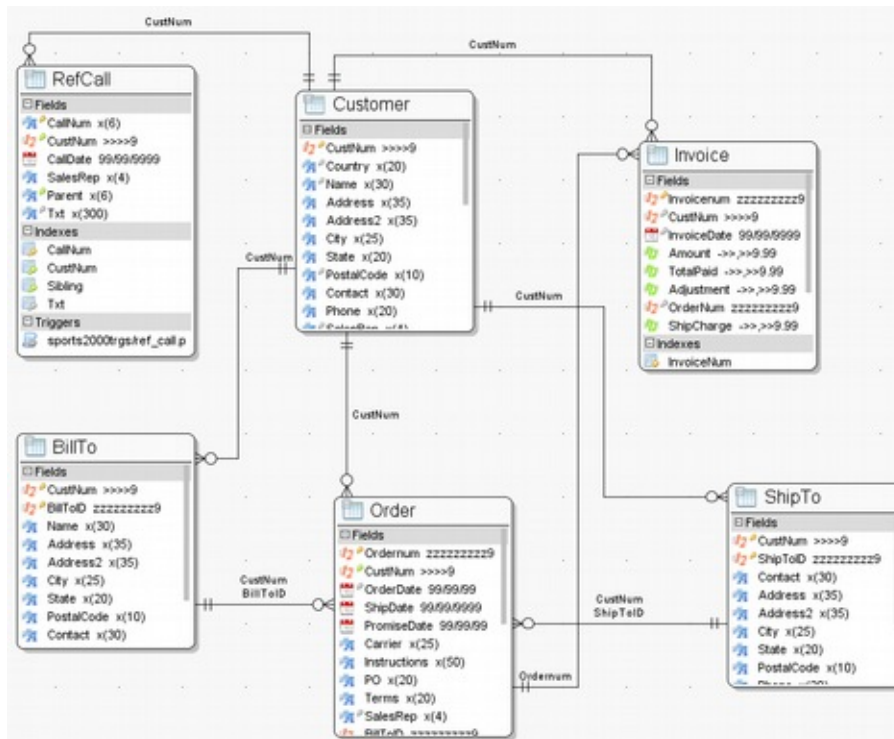
The subview now shows a blue relation arrow between the two tables.



If more than two tables were selected: in the upcoming window select from suggested relations. Choose the relations which are correct and useful in your point of view. PCase may detect relations, which are not useful and not intended. And you may have relations, which could not be found by the algorithm. Then you need to add these by hand.



The subview now shows relations between the selected tables.



Hint: You can reposition the relation arrows with drag and drop.

Date: 26 September 2017

Version: 1.0

Author: Denes Burgos, Klaus Erichsen

Copyright: IAP GmbH, Hamburg, Germany